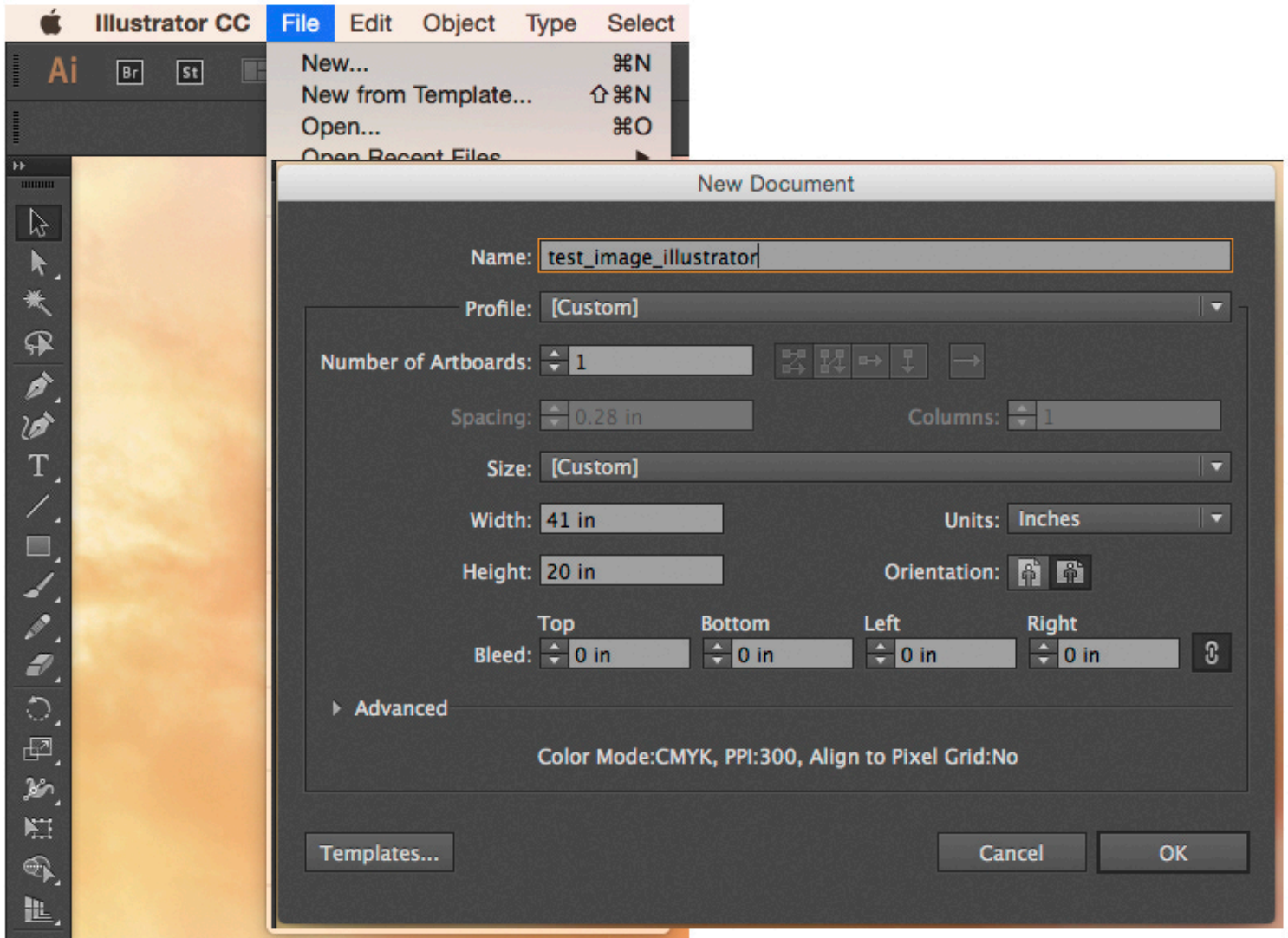




Z6200 PRINTING
ADOBE ILLUSTRATOR
(ADDM_MATTE , ADDM_SATIN)



1- Launch Adobe Illustrator Software
Choose File, New

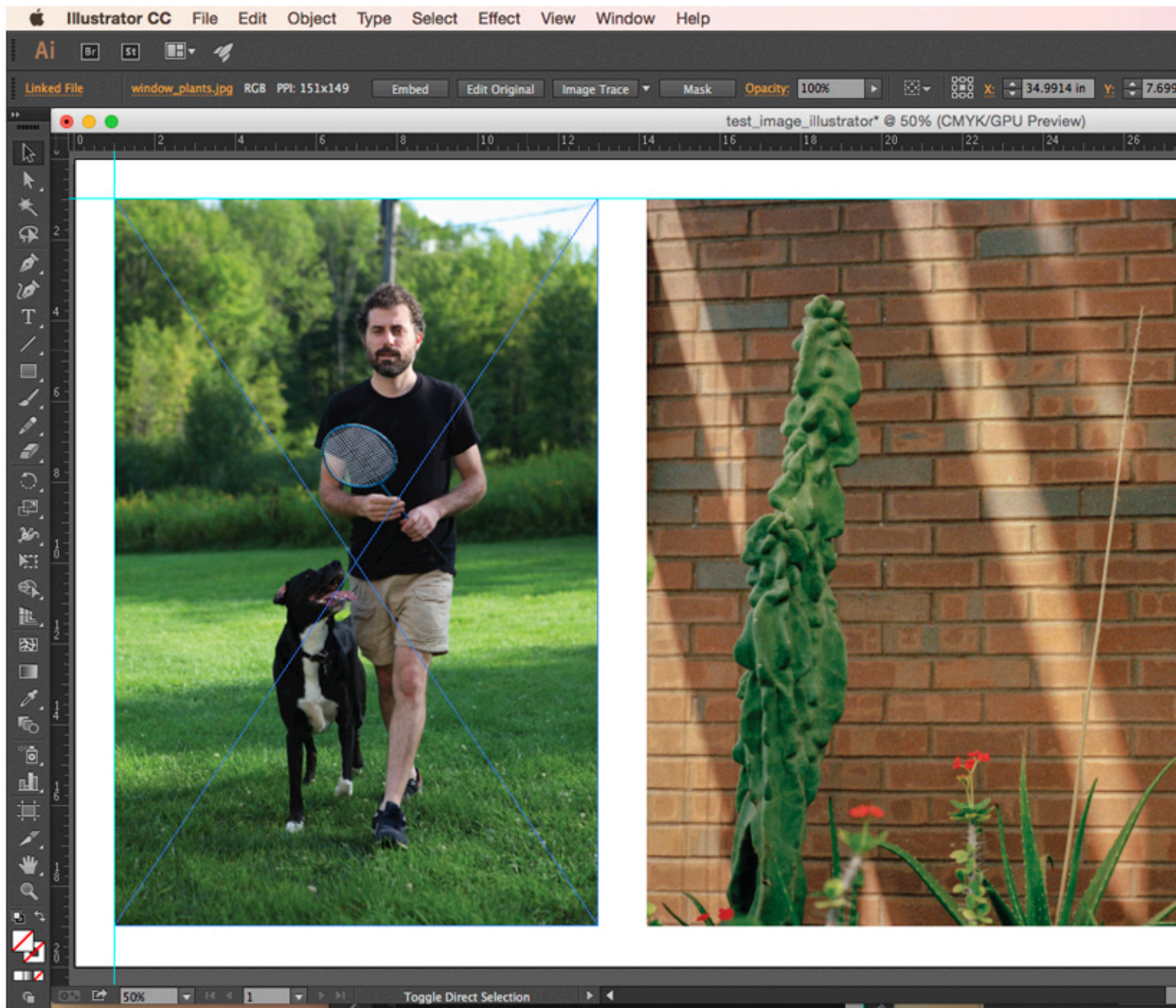
Size your Art board to the desired paper size, no larger than 300 DPI and make sure the smallest dimension does not exceed 41" wide.

***You are charged for the full 41" paper width, so maximize your paper use.**

Be sure your image(s) are saved to the desired print size; make sure the DPI is consistent with the Art board you just created. If they don't match up this will affect the size of your printed image.

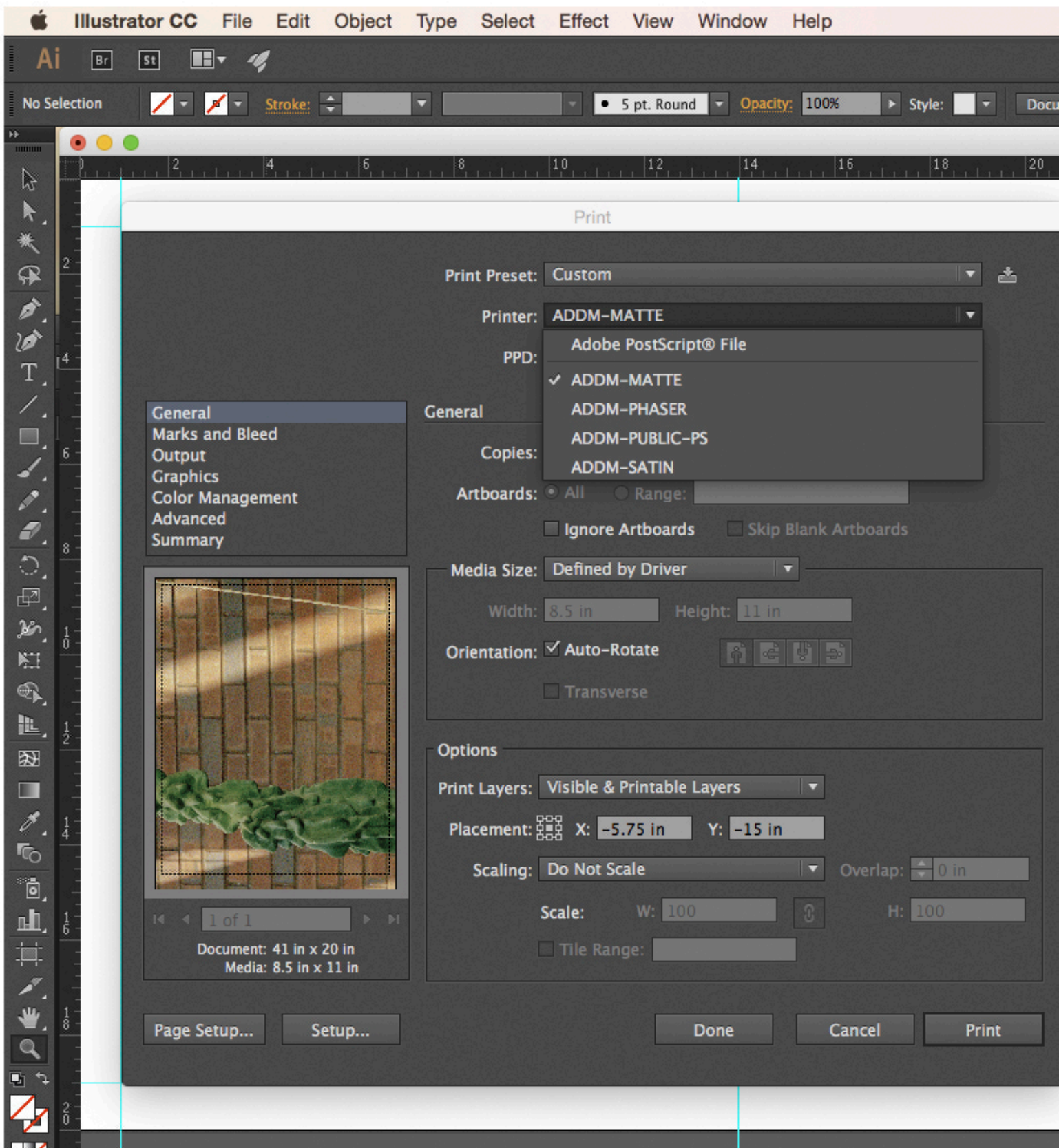
Choose File, Place

to select the file you want to print. Click on the artboard to set your image. You can rotate your image or place additional images to maximize your paper use.



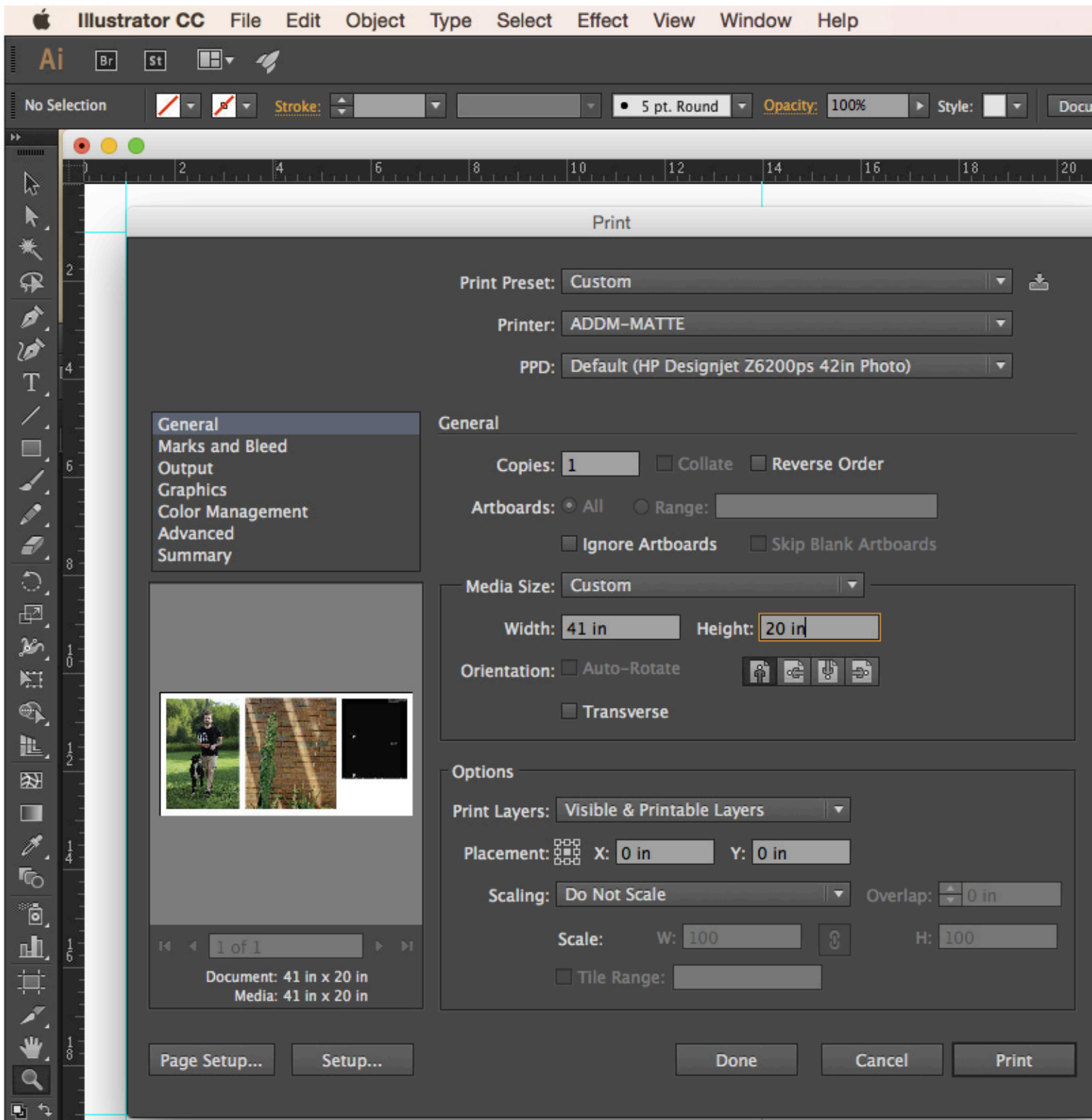
2- Choose File, Place

To select the file you want to print. Click on the art board to set your image. You can rotate your image or place additional images to maximize your paper use.



3- Choose File, Print

Printer: Choose ADDM-MATTE for Matte Surface Paper (\$.75 per square foot)
or
ADDM-SATIN for Satin Surface Paper (\$1.00 per square foot)

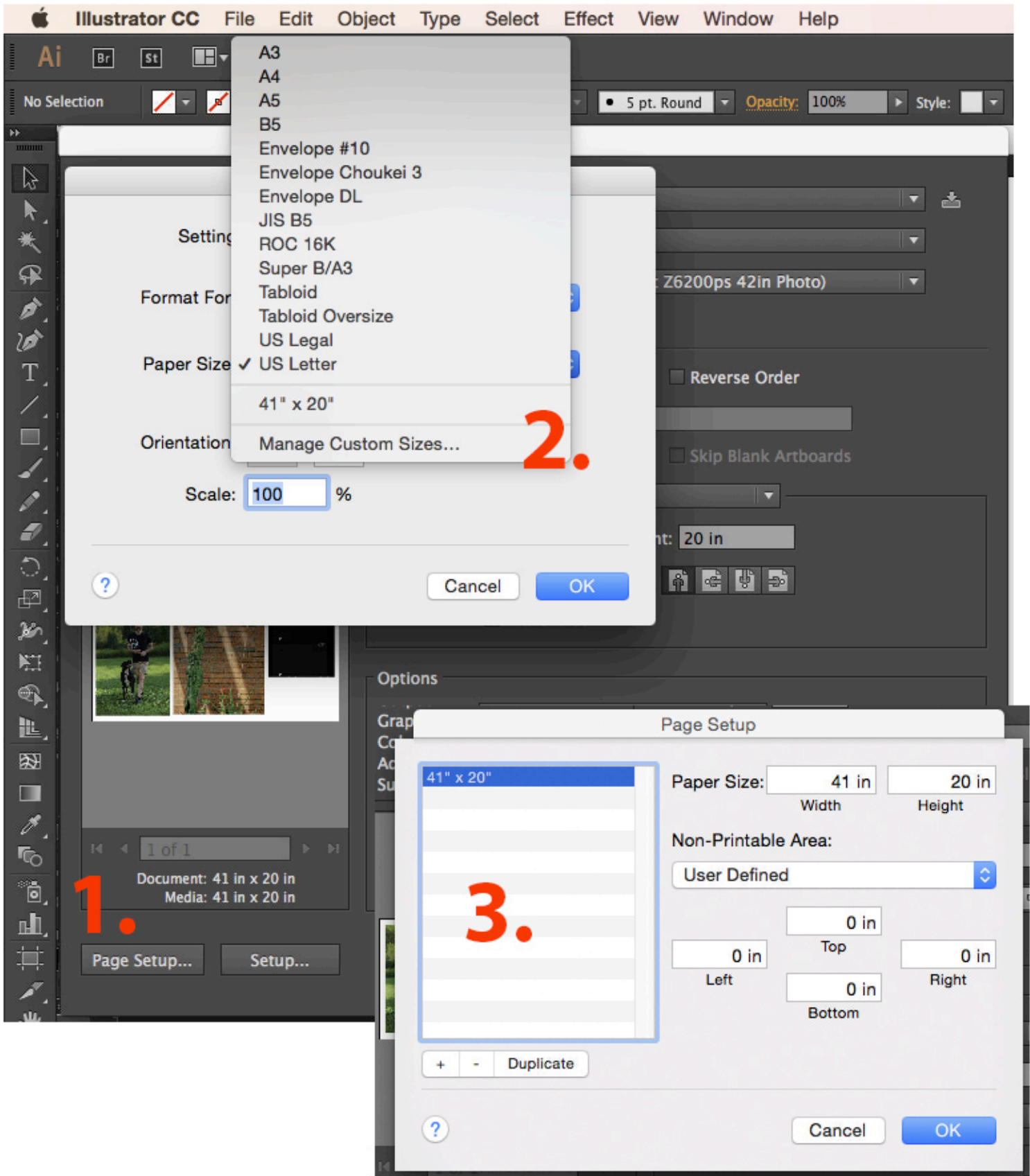


4- Media Size: Custom (This is the paper size)

Width: Set the width to the size of your art board

Height: Set the height to the size of your art board

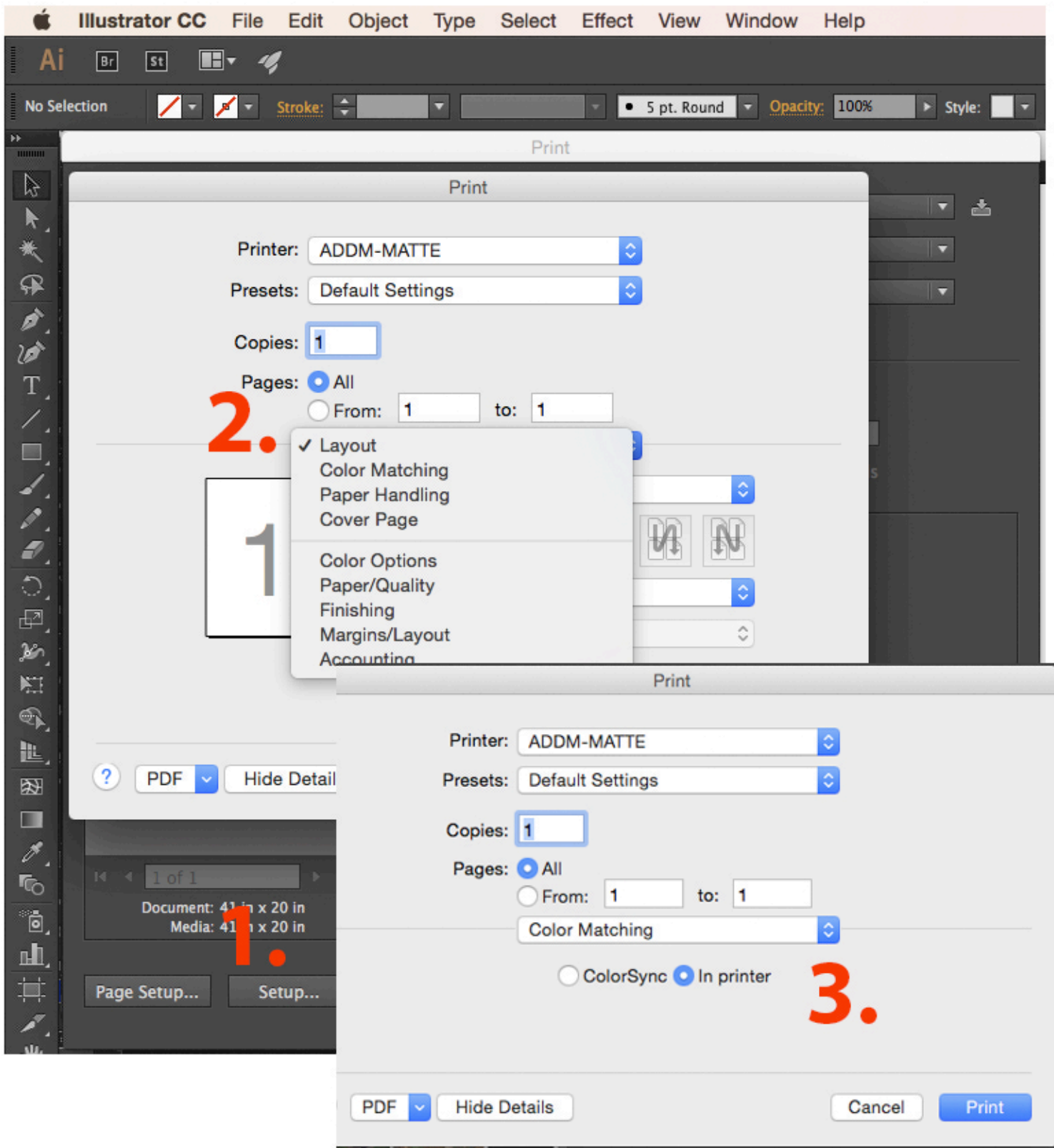
Orientation: If you are not seeing the intended orientation of your art board after setting the custom paper size, choose the correct orientation here.



5- Choose, Page Setup (Bottom left)

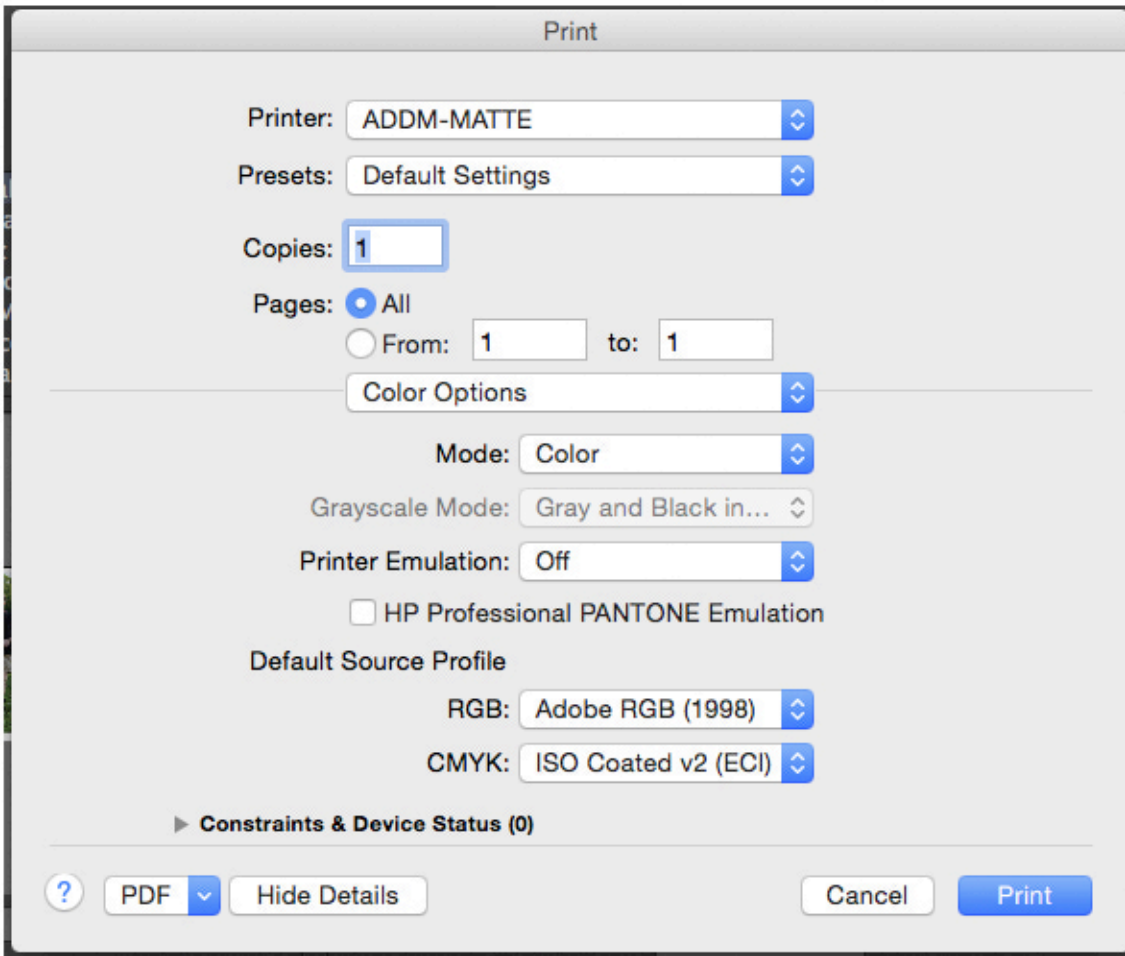
-Select Manage Custom Sizes, if you don't see your paper size, create a custom paper size.

-Choose, OK



6- Choose, Set Up

- Layout, Color Matching: In Printer
- Under Layout menu, select Color Options



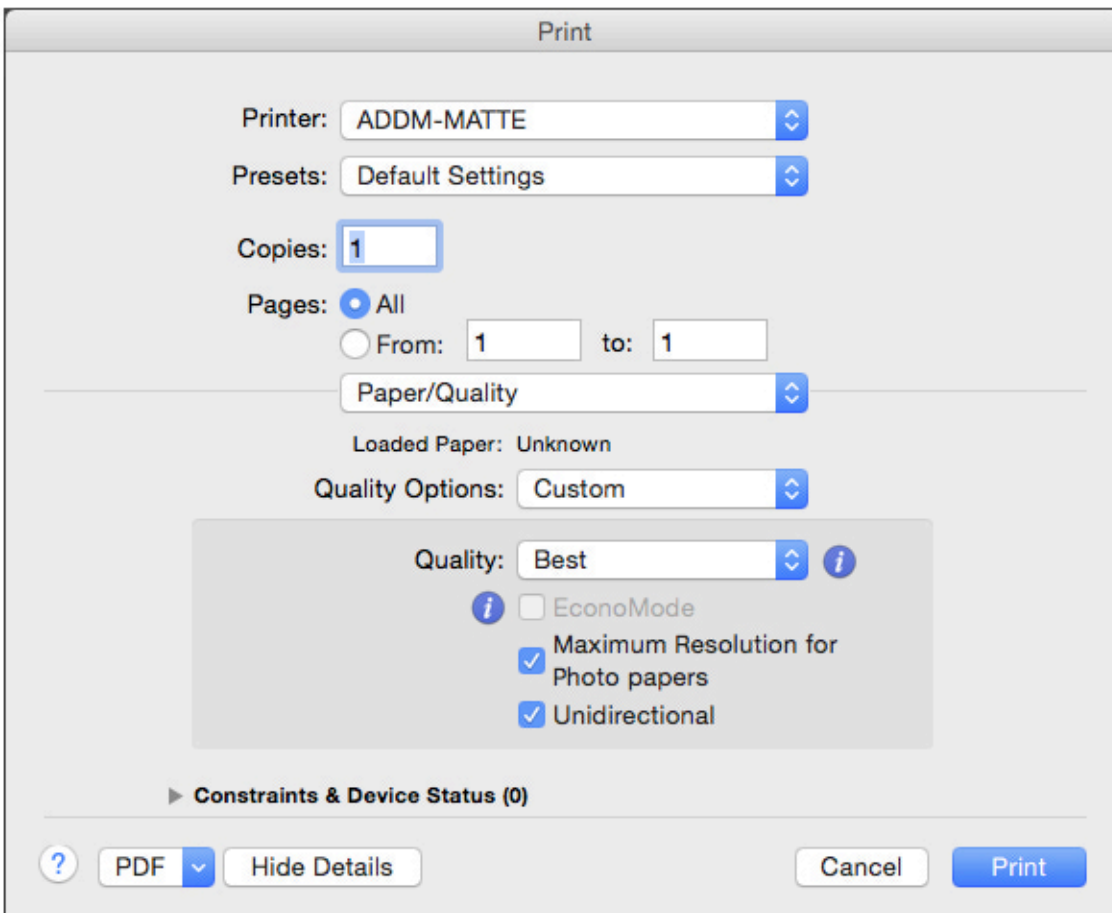
7-
Layout, Color
Options

Mode: Choose Color
or Grayscale

Printer Emulation: Off

Pantone Emulation:
Off

Default Source Profile:
RGB: Adobe RGB(1998)
CMYK: ISO Coated V2



Layout, Paper/Quality

Quality Options:
Custom

Quality: Best

Check, Maximum
Resolution for
Photo papers
and
Unidirectional

Print!